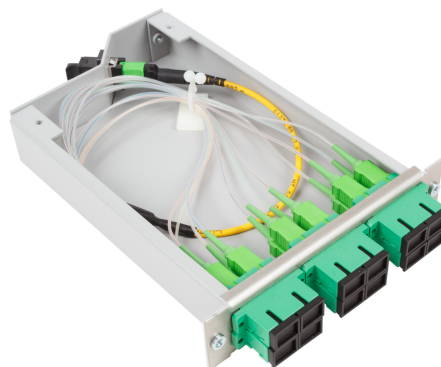


## CAPM cassettes

### Description:

The OPTOKON CAPM cassette offers a convenient and much more reliable alternative to unprotected pigtail splicing or field termination. The CAPM cassettes accept passive fiber optic components such as attenuators, couplers/splitters, WDM and CWDM multiplexers, filters, circulators and many other networking devices. As the fiber optic components have been installed into the CAPM cassettes it is possible to include them into fiber optic networks by using the standard system of Optical Distribution Frames without any need for special distribution frames.



### Features:

- Factory terminated and 100% tested
- Rugged and secure snap-in modular housing
- Accepts single or ribbon fibers cable
- Cable designed for easy splice preparation
- Wide range of passive fiber optic components
- Reduces installation time

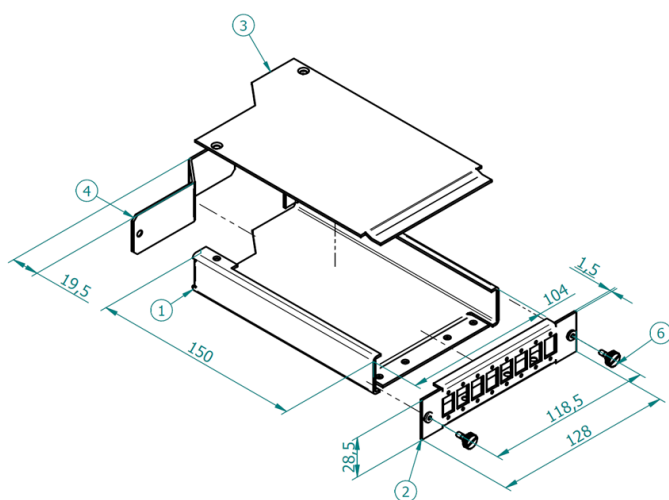
### Specifications:

#### Types:

- CAPM Not equipped module
- CAPM/P Pigtail module
- CAPM/F Fan-out module
- CAPM/S Splice module
- SFT-CAPM Coupler/Splitter module
- SFW-CAPM WDM/CWDM module

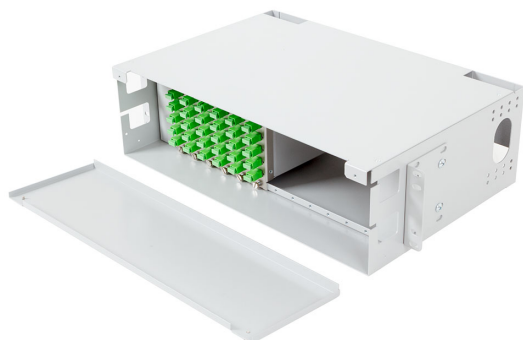
#### Parts Assembly:

- Main body
- Top cover
- Front adapter panel
- Rear panel
- Adapters, cable grommet, pigtails, fan-out, ...



- 1) Main body
- 2) Front adapter panel
- 3) Top cover
- 4) Rear entry panel
- 6) Screws CNPM

## 9" Installation possibilities



OFDU-CAP - 3U frame for 12x CAPM



FP-1S / FP-1E - 1U front panel for 2x / 3x CAPM

### Application:

- Preterminated cables
- Pigtail splicing
- Ribbon pigtail
- Splitter/coupler
- WDM, CWDM multiplexers

**Ordering code:**

**1. Not equipped module (empty CAPM cassette)**

CAPM	-	AAA XX	-	X	-	XX-DIN <sup>3</sup>
<b>Front Panel Adapter Type</b>			<b>Rear Panel</b>			
<b>SC-06</b>	6 x SC adapter		<b>Cable Entry Type</b>		<b>Adapter Entry Type</b>	
<b>SC-08</b>	8 x SC adapter		<b>B</b> Blank panel		<b>M</b> MPO (MTP)	
<b>E2-06</b>	6 x E2000 adapter		<b>C</b> Cable entry panel <sup>1</sup>		<b>SC</b> SC adapter	
<b>E2-08</b>	8 x E2000 adapter		<b>A</b> Adapter entry panel		<b>E2</b> E2000 adapter	
<b>FC-06</b>	6 x FC adapter				<b>FC</b> FC adapter	
<b>FC-08</b>	8 x FC adapter				<b>ST</b> ST adapter	
<b>ST-06</b>	6 x ST adapter				Other on request	
<b>ST-08</b>	8 x ST adapter					
<b>MJ-06</b>	6 x MT-RJ adapter					
<b>DLC-06</b>	6 x LC duplex					
<b>DLC-08</b>	8 x LC duplex					
<b>DSC/QLC-03<sup>2</sup></b>	3 x DSC or QLC					
<b>DSC/QLC-06<sup>2</sup></b>	6 x DSC or QLC					
Other type on request			Note: 1) Including PG9 cable gland (Cables Æ up to 9.0 mm) 2) Adapters without fixing by screws  3) Optional - equipped with DIN holder			



CAP-front panel E2-06



CAP-front panel DE2-06



CAP-front panel DSC-06



CAP-front panel DSC-03



AP-front panel FC-06



CAP-front panel FC-08



CAP-front panel SC-08



Rear entry panel - C



Rear blank panel - B



Rear entry panel - C

## 2. Pigtail module

Includes pre-terminated optical cable, appropriate adapters and PG9 cable grommet (cables up to 9.0 mm)

CAPM/P	- XX XXX	- XX	- XXX(F) <sup>5</sup> X	- XX-DIN <sup>6</sup>								
<b>XX</b> - Fibers number up to 12		<b>XX</b> <sup>2</sup> - Cable type <b>TB</b> Tight buffered <b>UT</b> Uni tube <b>RB</b> Ribbon	<b>XX</b> - Length (m)									
<b>XXX</b> - Type of fiber <b>OM1</b> MM 62.5/125 μm <b>OM2</b> MM 50/125 μm <b>OM3</b> MM 50/125 μm			<b>Front panel adapter type</b> <sup>4</sup> <table><tr><td><b>XXX</b></td><td><b>X</b></td></tr><tr><td><b>ST(F)</b> ST</td><td><b>M</b> Multimode</td></tr><tr><td><b>SC(F)</b> SC</td><td><b>S</b> Singlemode</td></tr><tr><td><b>FC</b> FC</td><td><b>A</b> APC</td></tr></table>		<b>XXX</b>	<b>X</b>	<b>ST(F)</b> ST	<b>M</b> Multimode	<b>SC(F)</b> SC	<b>S</b> Singlemode	<b>FC</b> FC	<b>A</b> APC
<b>XXX</b>	<b>X</b>											
<b>ST(F)</b> ST	<b>M</b> Multimode											
<b>SC(F)</b> SC	<b>S</b> Singlemode											
<b>FC</b> FC	<b>A</b> APC											

**S2D** SM G.652D  
**S5X<sup>3</sup>** SM G.655C-D  
**S7X<sup>3</sup>** SM G.657A-E

**E2(F)** LSH (E2000)  
**MJ** MT-RJ  
**DSC<sup>1</sup>** duplex SC  
**DLC(F)** duplex LC  
**MU(F)** MU

### Note:

- 1) Adapters without fixing by screws
- 2) Other type - on request
- 3) X - Refer to relevant fiber type, for example: S7A - G.657A
- 4) FC, ST, E2 - up to 8 fibers capacity
- 5) F - Fixed adaptors by screws
- 6) Optional - equipped with DIN holder

### 3. Fan-out module

Internal interconnection between MPO/MTP ribbon connector and up to 12 single connectors SC, LC, ...

CAPM/F	- XX XXX	- XXX(F) <sup>5</sup> X	- M-DIN <sup>6</sup>
<b>XX</b> - Fibers number  up to 12			
			Rear adapter
			MPO/MTP
Front panel adapter type <sup>4</sup>			
<b>XXX</b> - Type of fiber		<b>XXX</b>	<b>X</b>
<b>OM1</b>	MM 62.5/125 μm	<b>ST(F)</b> ST	<b>M</b> Multimode
<b>OM2</b>	MM 50/125 μm	<b>SC(F)</b> SC	<b>S</b> Singlemode
<b>OM3</b>	MM 50/125 μm	<b>FC</b> FC	<b>A</b> APC
<b>S2D</b>	SM G.652D	<b>E2(F)</b> LSH (E2000)	
<b>S5X<sup>3</sup></b>	SM G.655C-D	<b>MJ</b> MT-RJ	
<b>S7X<sup>3</sup></b>	SM G.657A-E	<b>DSC<sup>1</sup></b> duplex SC	
		<b>DLC(F)</b> duplex LC	
		<b>MU(F)</b> MU	

- Note:
- 1) Adapters without fixing by screws
  - 3) X - Refer to relevant fiber type, for example: S7A - G.657A
  - 4) FC, ST, E2 - up to 8 fibers capacity
  - 5) F - Fixed adaptors by screws
  - 6) Optional - equipped with DIN holder

### 4. Splice module

Includes pigtails, adapters, PG9 cable grommet - cables □ up to 9.0 mm, splice protections and splice bridge

CAPM/S - XX XXX		- XXX(F) <sup>5</sup> X		- M-DIN <sup>6</sup>	
XX - Fibers number		Front panel adapter type <sup>4</sup>			
up to 12		XXX		X	
XXX - Type of fiber		ST(F)		M	
OM1		SC		S	
OM2		FC		A	
OM3		E2(F)		LSH (E2000)	
S2D		MJ		MT-RJ	
S5X <sup>3</sup>		DSC <sup>1</sup>		duplex SC	
S7X <sup>3</sup>		DLC(F)		duplex LC	
		MU(F)		MU	

- Note: 1) Adapters without fixing by screws  
 3) X - Refer to relevant fiber type, for example: S7A - G.657A  
 4) FC, ST, E2 - up to 8 fibers capacity  
 5) F - Fixed adaptors by screws  
 6) Optional - equipped with DIN holder

## 5. Coupler/Splitter module (including appropriate coupler/splitter and adapters)

For ordering code see Coupler/Splitter datasheet  
 (CPL\_06-02\_EN-SFT-S35-01x02, CPL\_08-02\_EN-SFT-S35-01xN)



## 6. WDM module (including appropriate WDM and adapters)

For ordering code see WDM datasheet  
 (CPL\_03-02\_EN-SFW)

